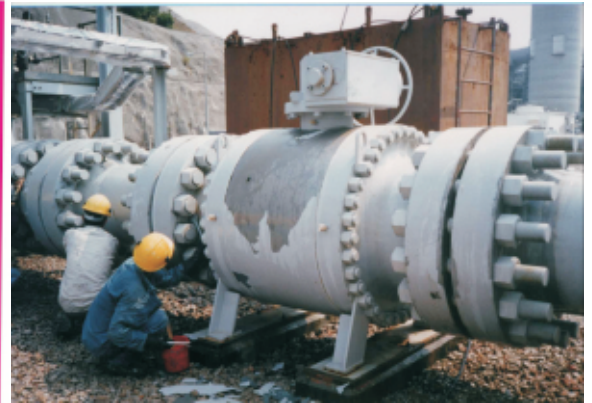


Paint Maintenance Work

China Light & Power Black Point
Power Plant - GRS station.



In CLP Black Point Power - GRS station, the paint maintenance work was done under the highest quality and safety requirements. CSC provided all spark proof surface preparation equipments and tools. . All painters and workers from CSC are well trained and experienced to meet the duties in such sensitive area.

The scope of work included derusting by hand tool, grit blasting, power washing and painting by brush and spray.